



Revised

[I-21/121/2024-W&M Section]

GOVERNMENT OF INDIA/भारत सरकार
MINISTRY OF CONSUMER AFFAIRS, FOOD AND PUBLIC DISTRIBUTION
उपभोक्ता मामले, खाद्य एवं सार्वजनिक वितरण मंत्रालय
DEPARTMENT OF CONSUMER AFFAIRS/ उपभोक्ता मामले विभाग
LEGAL METROLOGY DIVISION/ विधिक मापविज्ञान प्रभाग

Krishi Bhawan/कृषि भवन, नई दिल्ली

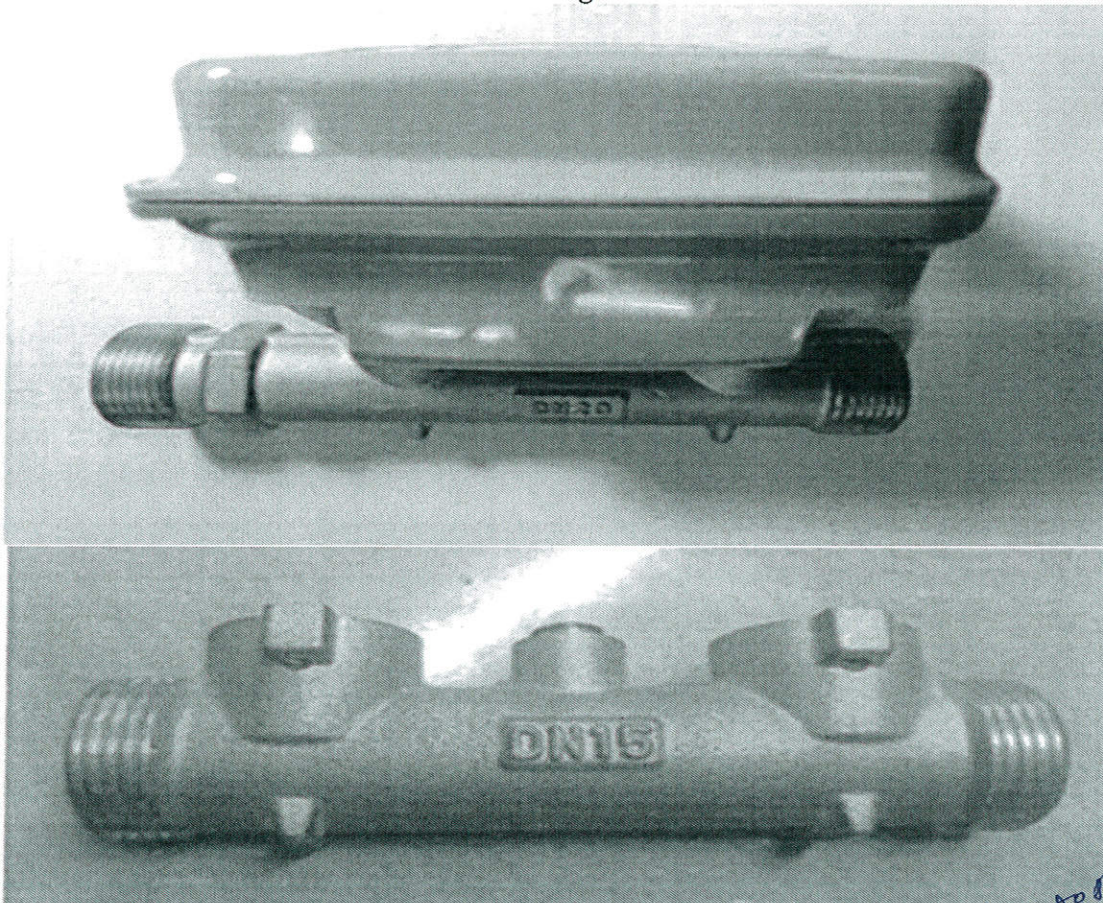
Dated/दिनांक: - 03.07.2024

Certificate of Approval of Model/ मॉडल का अनुमोदन प्रमाणपत्र

Whereas the Central Government, after considering the report submitted to it by the prescribed authority along with the OIML Certificate no.: R49/2013-A-CZ1-2024.01 issued by Czech Republic, is satisfied that the model described in the said report (see the figure given below), is in conformity with the provisions of the Legal Metrology Act 2009(1 of 2010) and the Legal Metrology (Approval of Models) Rules, 2011 and the said model is likely to maintain its accuracy over periods of sustained use and to render accurate service under varied conditions;

Now, therefore, in exercise of the powers conferred by section 22 of the Legal Metrology Act, 2009 (1 of 2010) read with sub-rule (6) of rule 8 and sub-rule (4) of rule 11 of the Legal Metrology (Approval of Models) Rules, 2011 and OIML R 49, the Central Government hereby issues the certificate of approval of the model of Ultrasonic Water Meter, Type: "GWU", of accuracy class: 2 (hereinafter referred to as the said model), manufactured by M/s Genus Power Infrastructures Limited, SPL-2A, RIICO Industrial Area, Sitapura, Tonk Road, Jaipur-302022, Rajasthan which is assigned the approval mark IND/09/24/267 (the picture of the model is given below as Figure 1);

Figure 1



Ashutosh Aggarwal



Basic Technical data of water meters:

Accuracy Class	2
Temperature Class	T50
Environmental Classes	M
Electromagnetic Environment	E1, E2
Q ₃ /Q ₁	1.6
Q ₄ /Q ₃	1.25
Measuring Principle	Ultrasonic
Maximum permissible error for the lower flowrate zone (MPE _l)	± 5%
Maximum permissible error for the upper flowrate zone (MPE _u)	± 2%
Maximum admissible pressure(MPa)	1.6
Indicating range (m ³)	999999
Power Supply	Battery 3.6 V

Basic Metrological Data (flowrates):

Manufacturer:	GENUS POWER INFRASTRUCTURES LIMITED										
Model number:	GWU001										
Nominal diameter:	15										
Q ₁ [m ³ /h]:	0.0063	0.0079	0.0100	0.0125	0.016	0.020	0.025	0.031	0.040	0.050	0.063
Q ₂ [m ³ /h]:	0.0100	0.0127	0.0160	0.0200	0.025	0.032	0.040	0.050	0.063	0.080	0.100
Q ₃ [m ³ /h]:	2.50	2.50	2.50	2.50	2.50	2.50	2.50	2.50	2.50	2.50	2.50
Q ₄ [m ³ /h]:	3.13	3.13	3.13	3.13	3.13	3.13	3.13	3.13	3.13	3.13	3.13
Q ₃ /Q ₁ :	400	315	250	200	160	125	100	80	63	50	40

Manufacturer:	GENUS POWER INFRASTRUCTURES LIMITED										
Model number:	GWU002										
Nominal diameter:	20										
Q ₁ [m ³ /h]:	0.0100	0.0127	0.0160	0.0200	0.025	0.032	0.040	0.050	0.063	0.080	0.100
Q ₂ [m ³ /h]:	0.0160	0.0203	0.0256	0.0320	0.040	0.051	0.064	0.080	0.102	0.128	0.160
Q ₃ [m ³ /h]:	4.0	4.0	4.0	4.0	4.0	4.0	4.0	4.0	4.0	4.0	4.0
Q ₄ [m ³ /h]:	5.0	5.0	5.0	5.0	5.0	5.0	5.0	5.0	5.0	5.0	5.0
Q ₃ /Q ₁ :	400	315	250	200	160	125	100	80	63	50	40

Ashutosh Aggarwal

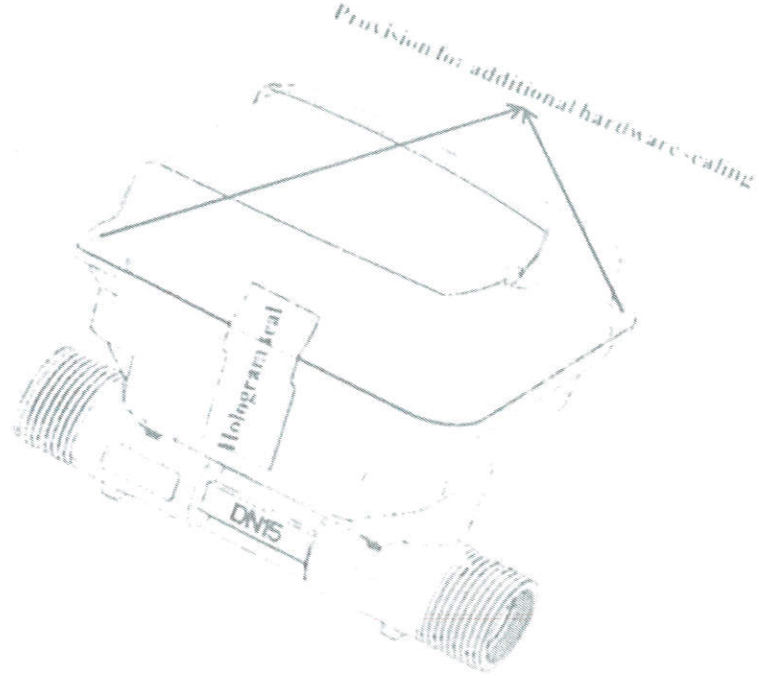


Figure-2 (Sealing Provision)

A typical schematic diagram of sealing provision to prevent the fraudulent practices of the model is given above as Figure 2.

[F.No. I-21/121/2024-W&M Section]

Ashutosh Agarwal

(Ashutosh Agarwal/आशुतोष अग्रवाल)
Director (Legal Metrology) to Govt. of India/ निदेशक (विधिक माप विज्ञान) भारत सरकार
Phone/दूरभाष 01123389489
Email/ई-मेल: dirwm-ca@nic.in

Online application no. 18356